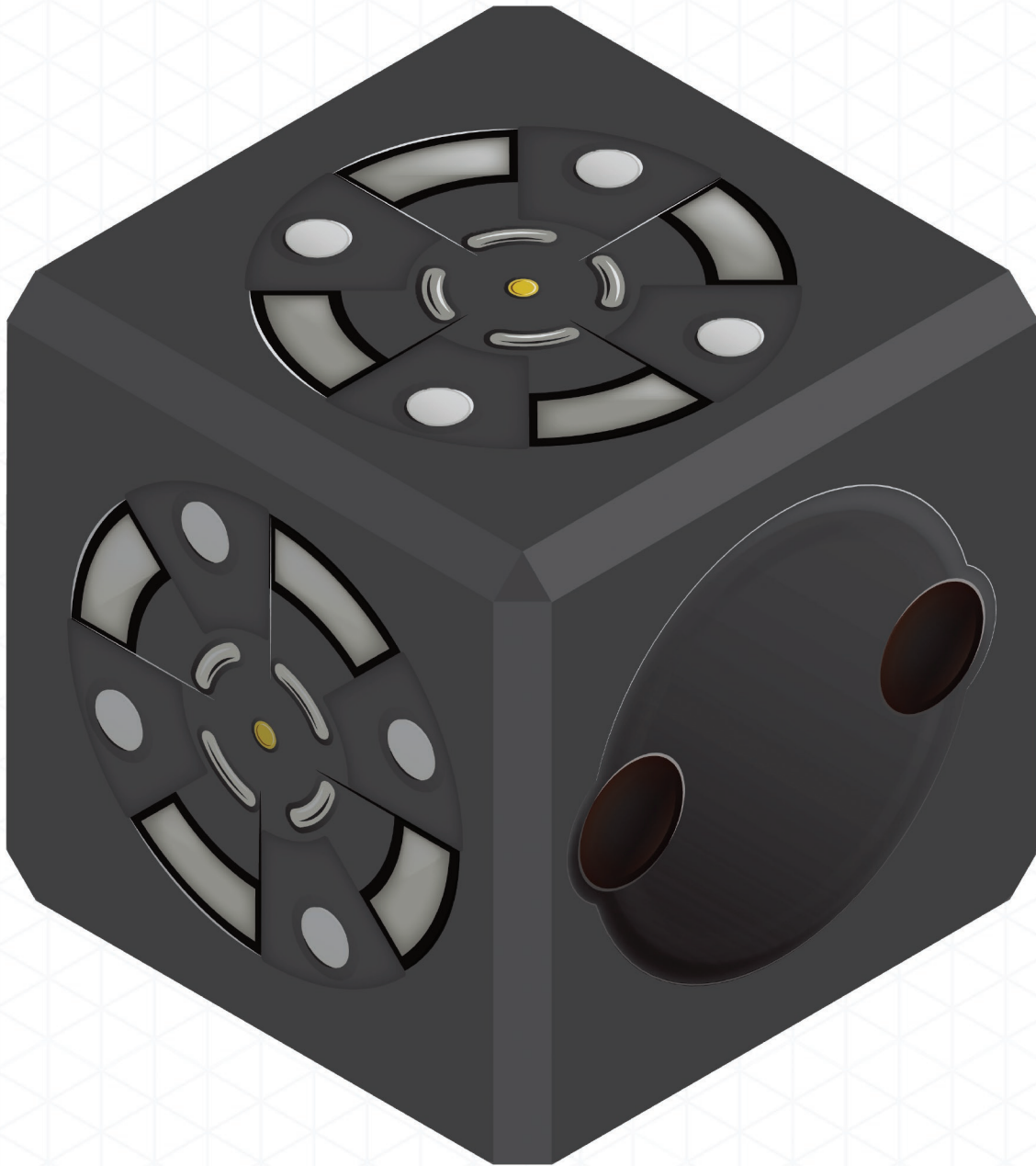


BRIGHTNESS CUBELET



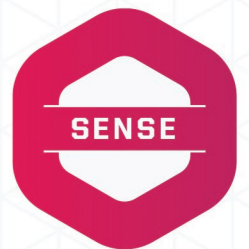
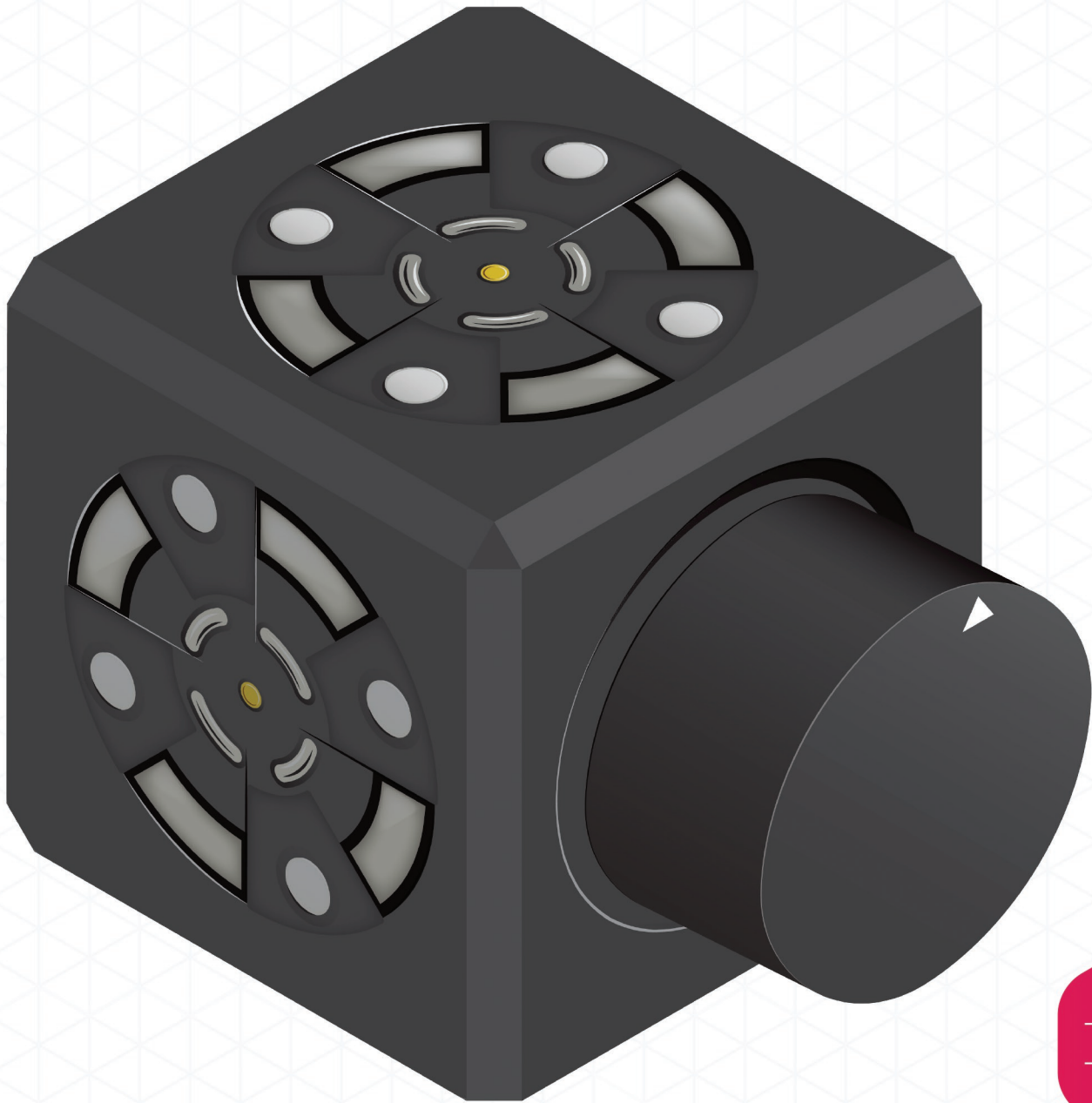
The Brightness Cubelet can always read the mood in the room. With its analog photocell, it detects the amount of light in front of it and sends a corresponding output. The more light it detects, the higher the output value.

DISTANCE CUBELET



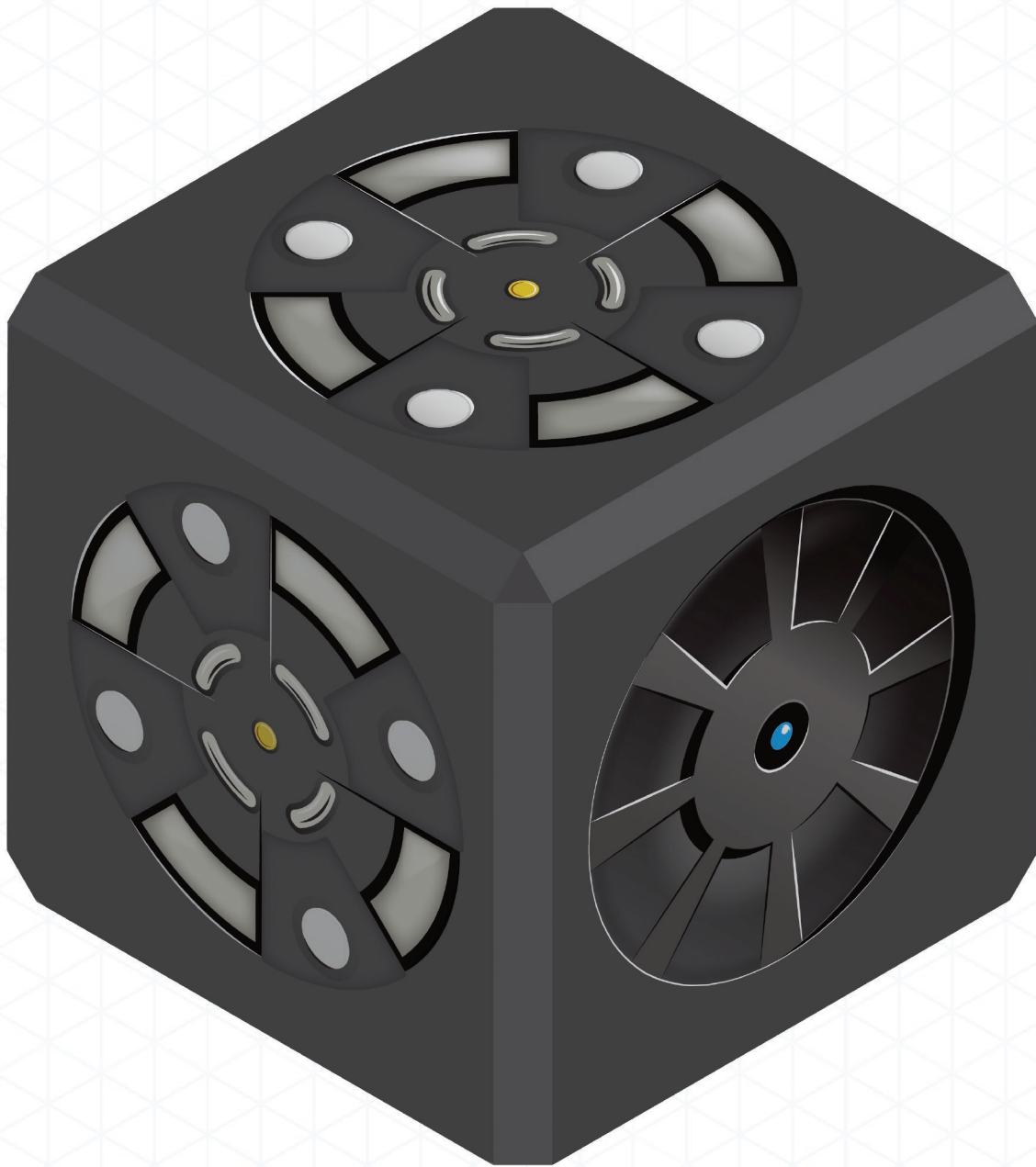
The Distance Cubelet is never too far from (or close to) the action. With its infrared light sensor, it detects how far it is from an object and sends an output that's relative to the distance. Its range of accuracy is between 10 and 70 cm, and the shorter the distance, the higher the output.

KNOB CUBELET



Set it and forget it! The Knob Cubelet produces a steady output based on the position of its knob. Use this Cubelet to dial in specific output levels and tune the behavior of your robots.

TEMPERATURE CUBELET



The Temperature Cubelet is a tiny thermometer (technically, a thermistor) that detects temperature. Use it to create robots that respond to changes in temperature. It sends a low output in freezing conditions and a high output in hot, sunny conditions of about 95 degrees Fahrenheit.